

# A Census Atlas for Lincolnshire

Katy Thomas

Lincolnshire Development



# A Census Atlas for Lincolnshire

- What is the census ?
  - single richest source of information on the resident population
  - conducted every 10 years by the ONS, most recently on 29<sup>th</sup> April 2001
  - it provides information on a range of issues down to very low geographical levels
  - a wealth of information taking time to process, check and release

# A Census Atlas for Lincolnshire

- What is the census ?
- How can we use census information ?
  - who is there, how they live and work, likely needs, contribution and potential
  - situation report for use as a baseline and for monitoring trends
  - explain causes, effects and interactions
  - proof of need to attract funding, develop policy, target services and to develop and monitor interventions

# A Census Atlas for Lincolnshire

- What is the census ?
- How can we use census information ?
- Why an atlas ?
  - vast dataset, potentially millions of data cells, impossible to visualise on its own
  - mapping presents data in a way that can be instantly understood, allowing highlighting of crucial issues/areas
  - allows comparison and analysis of interactions quickly and easily whether from the census or from other sources

# A Census Atlas for Lincolnshire

- What has the 2001 Census told us ?
  - from 1991 to 2001 the population of Lincolnshire has grown more quickly than any other county in England, with a 10% increase to 646,645 people
  - the districts of North Kesteven, South Kesteven and South Holland accounted for two thirds of this increase
  - net inward migration is responsible for this population increase
  - Lincolnshire's population continues to age and the gap with other areas is widening

# Census Analysis

- Outward Migrants (12 months prior)
  - typically young
  - healthy
  - economically active
- Inward Migrants (12 months prior)
  - again, typically young
  - healthy
  - less economically active

# Census Analysis

- Net migration
  - aging population even though in-migrants are relatively young
  - increasing proportions of people with health problems even though in-migrants are relatively healthy
  - and decreasing economic activity rates

# Presentation Techniques

- Table provision of suitable data
  - LRO data base
  - Factsheets on specific issues
  - Area profiles

# Presentation Techniques

- Table provision of suitable data
- Description and narrative reporting
  - Reports on specific issues
  - Census Atlas for Lincolnshire

# Presentation Techniques

- Table provision of suitable data
- Description and narrative
- Simple and fine detail mapping

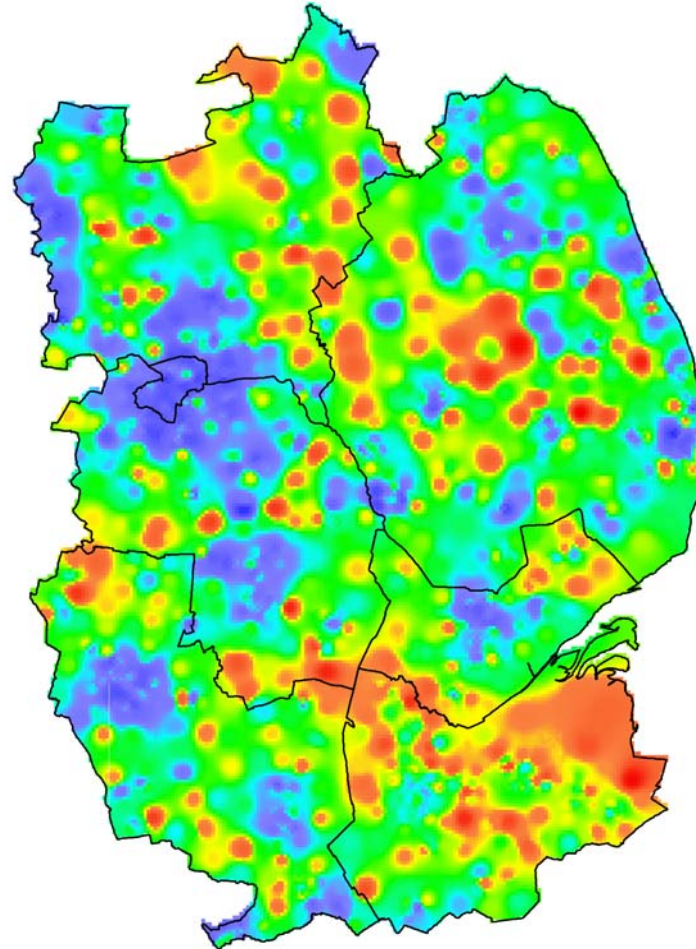
# Presentation Techniques

- Simple and fine detail mapping



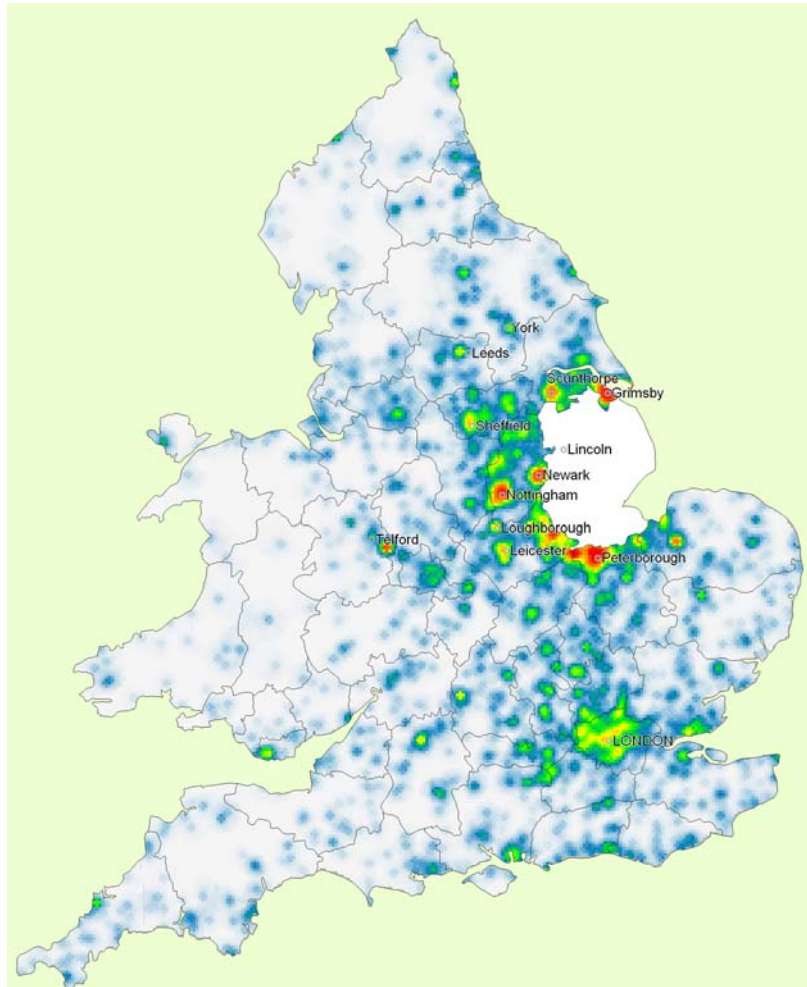
# Presentation Techniques

- Simple and fine detail mapping



# Presentation Techniques

- Simple and fine detail mapping



# Presentation Techniques

- Pinpointing of very specific communities

Issue G – Proportion of households without central heating and/or sole use of a bath/shower and toilet

Output Area Code	District	General Area Description	% without facilities (of all households)
32UHGL0004	West Lindsey	Queen St area off Bridge Rd, Gainsborough	45.7
32UCJK0018	East Lindsey	Area round Tower Gdns, Skegness	42.2
32UGGU0020	South Kesteven	Rds off Shanklin Drive and Dysart Rd, Earlsfield, Grantham	41.0
32UHGL0010	West Lindsey	Stanley St area nr Benjamin Adlard school, Gainsborough	40.9
32UHGL0009	West Lindsey	Ashcroft Rd and Waterworks St area of Gainsborough	40.6
32UDFY0015	Lincoln	East of Sincil Bank, Lincoln	39.0
32UGGZ0003	South Kesteven	Spittlegate area of Grantham	38.6
32UCJK0001	East Lindsey	Lumley Rd, Grand Parade and South Parade, Skegness	38.4
32UHGL0006	West Lindsey	Area to east of Bridge St, just North of Gainsborough bridge	37.5
32UDFY0012	Lincoln	Part of Portland St and Chelmsford St, Off High St	37.4
<b>Lincolnshire</b>			<b>6.2</b>
<b>East Midlands</b>			<b>6.1</b>
<b>England &amp; Wales</b>			<b>8.8</b>

Figures shown are rounded to the nearest decimal place.

# Presentation Techniques

- Table provision of suitable data
- Description and narrative
- Simple and fine detail mapping
- Combination of other data sources
  - Research sources
  - LRO data and map layers

# Access to Census Material

- Publications – hard copies and electronic copies on the LRO
- Datasets on the LRO – download, mapping, comparison and analysis, saving, printing
- Interactive model for the report findings, data and mapping through the new LRO toolkit
- Register for site updates

[www.Research-Lincs.org.uk](http://www.Research-Lincs.org.uk)